

Chain Block Bridge Girder



Instructions for the assembly of a chain block bridge

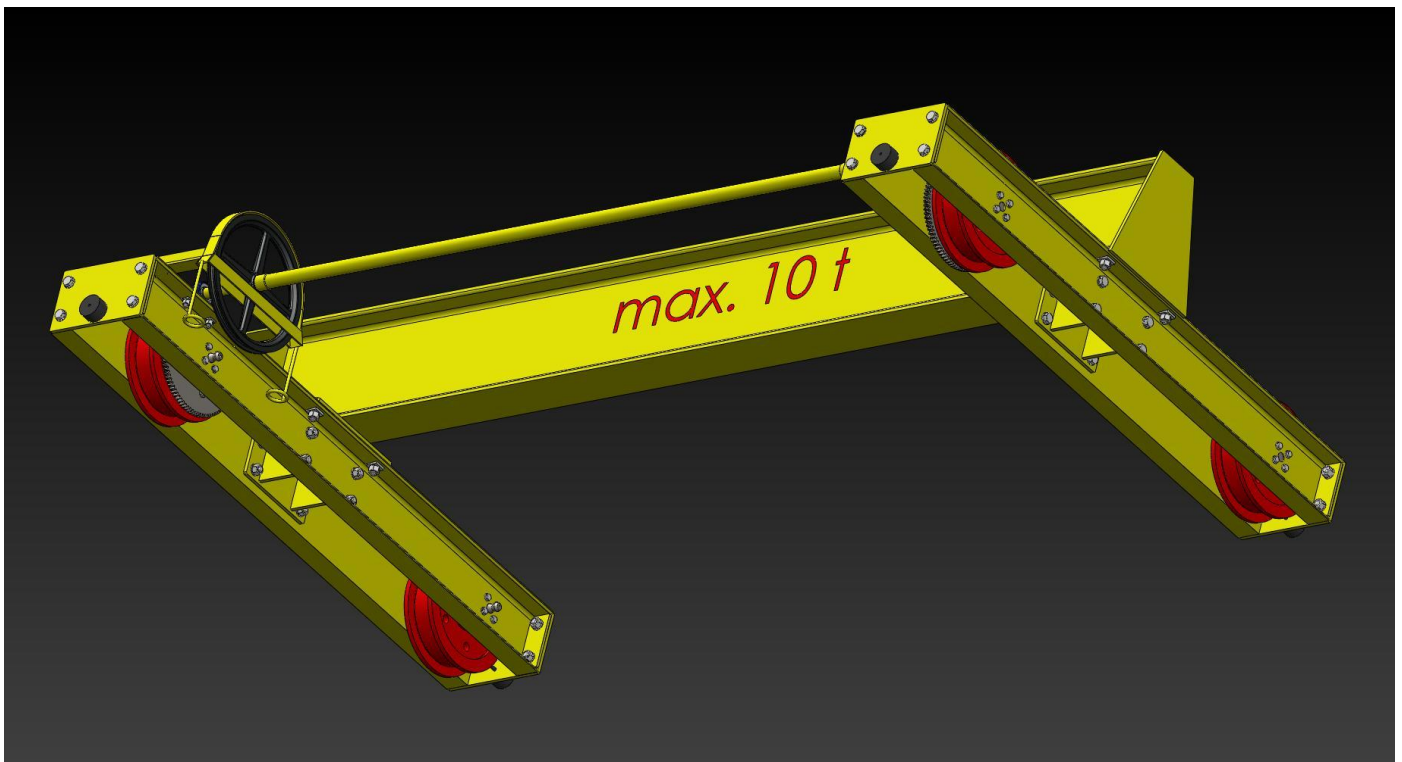
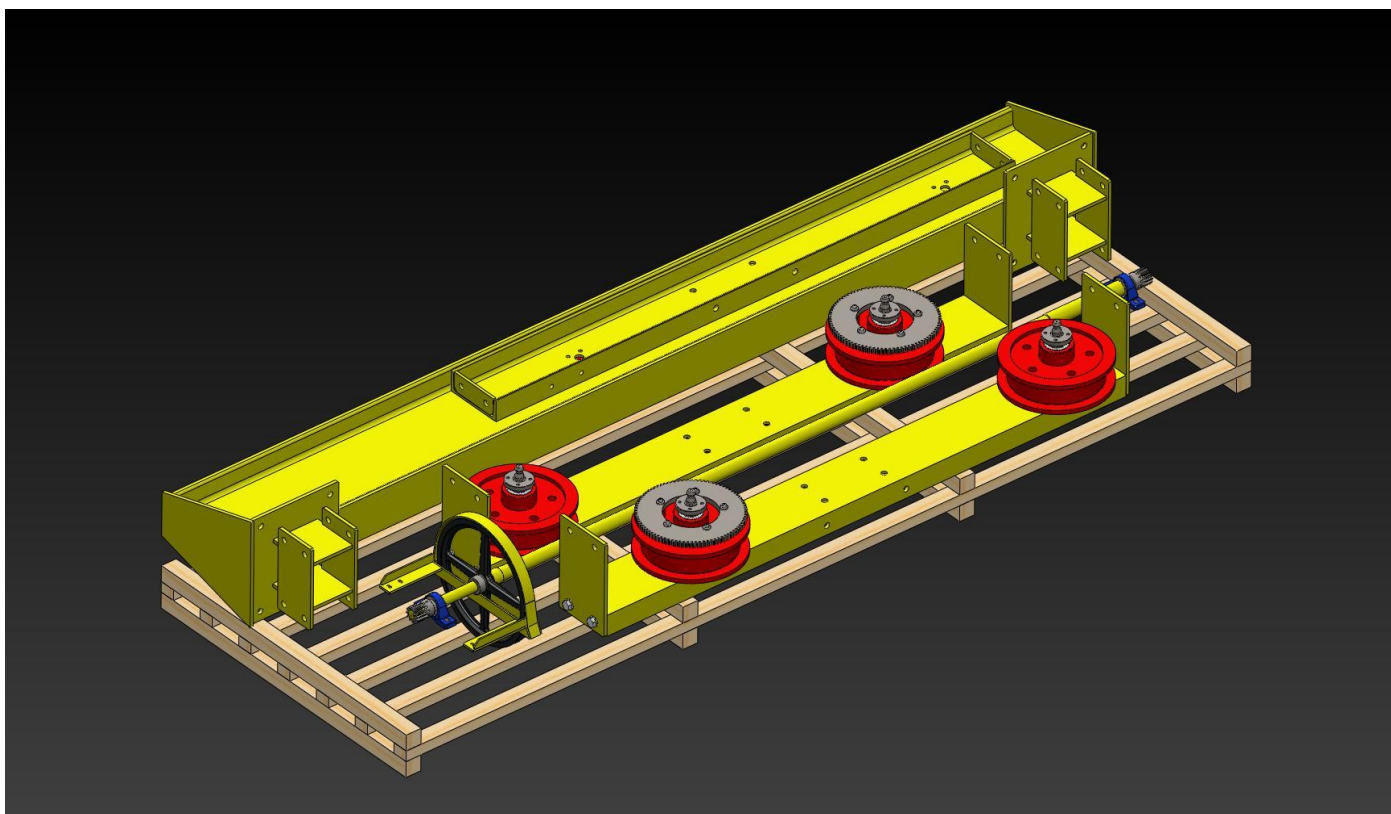


Fig. 1 Chain block bridge

Chain Block Bridge Girder



Package on the pallet.

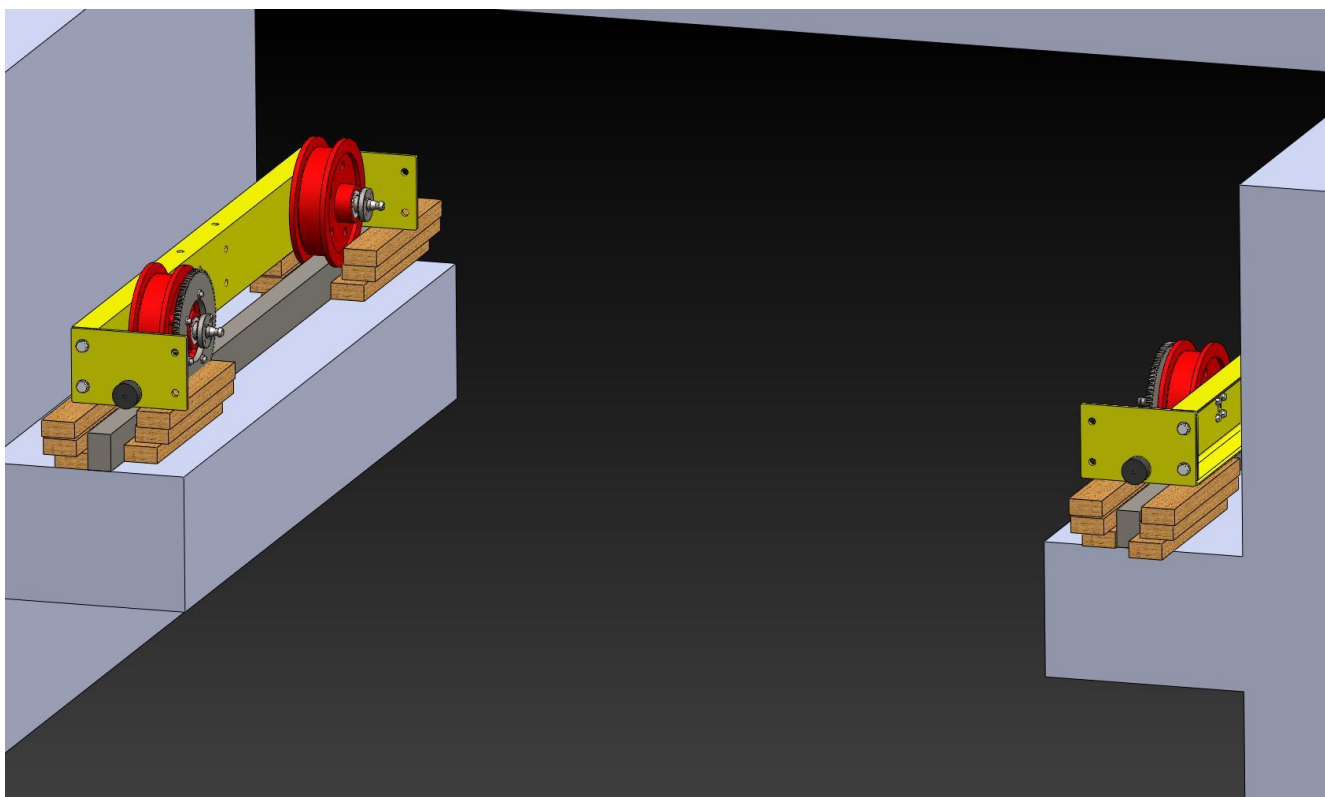


Fig. 2 Positioning undercarriage on rails and securing it against fall by wooden blocks.

Chain Block Bridge Girder

Position the undercarriage on rails and secure it against fall by wooden blocks according to fig. 2.

Then use a suitable tie to fix this undercarriage on the crane runway to prevent fall!

Remove these blocks and tie only after the completion of the assembly!

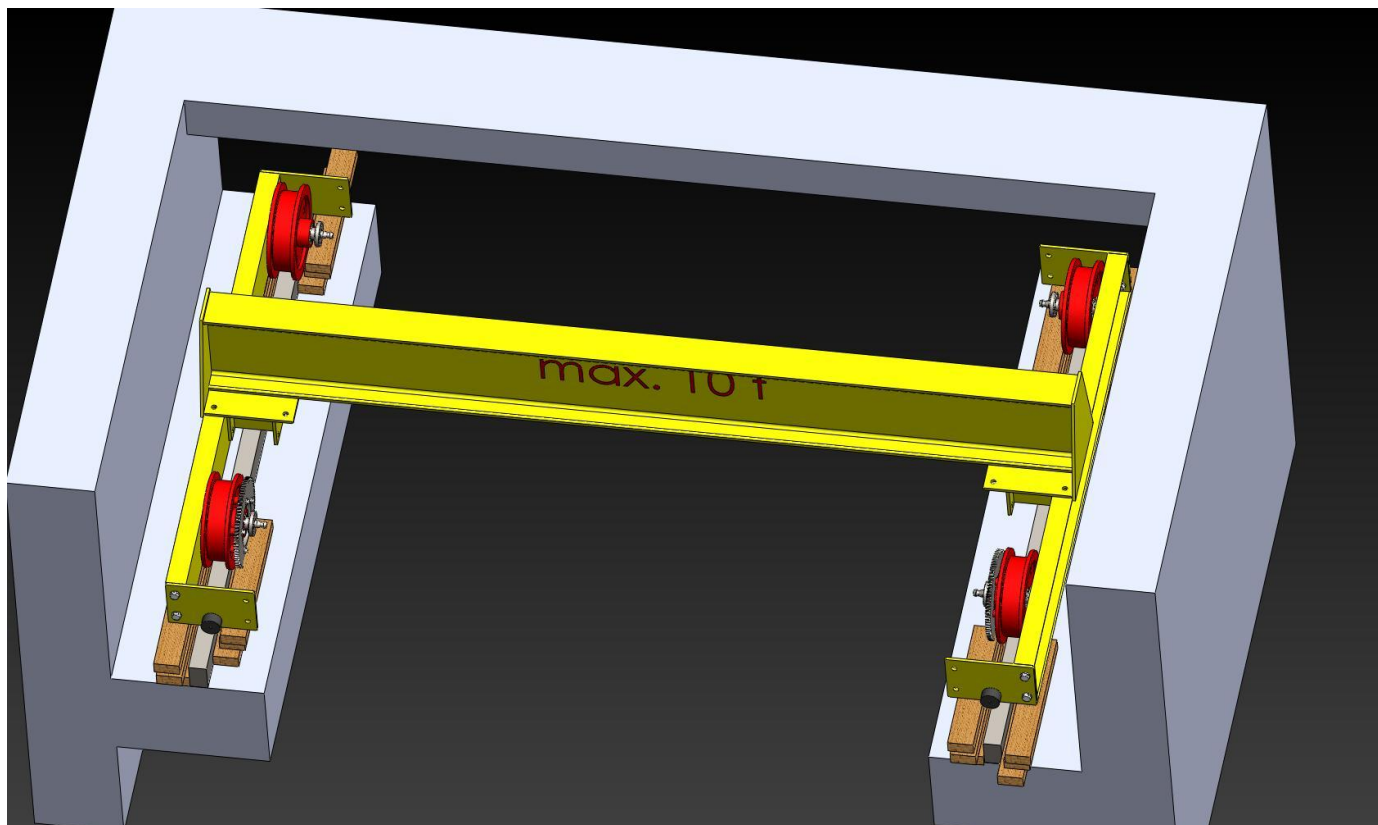


Fig. 3 Carefully position the girder on the undercarriage secured, and connect individual parts by 4 pcs of bolts M20x60 (insert the bolts from the top; use flat round washers under bolt heads); from below, use angle square washers and nuts M20x60mm.

Then complete the connection of the undercarriages to this girder using 8 pcs of horizontally placed bolts M20x50mm.

Correct placement of bolts, washers, angle square washers and nuts is shown in fig. 5 and 6!

Chain Block Bridge Girder

Now check side clearance between wheel tires and rails; for description refer to page 9.

The wheel gauge can be partially adjusted by replacing washers on wheel pins. To do so, it is necessary to dismount wheels from the undercarriage and then dismount pins from these wheels. The wheel gauge can be enlarged by moving the 4mm-thick distance washers to the other side of the wheel hub (if the modification is made on one rail, the gauge is enlarged by 4mm). If the wheel gauge needs to be reduced, it is necessary to shorten the distance bushes by lathe-turning and to manufacture washers of required (missing) thickness – refer to fig.4

Chain Block Bridge Girder

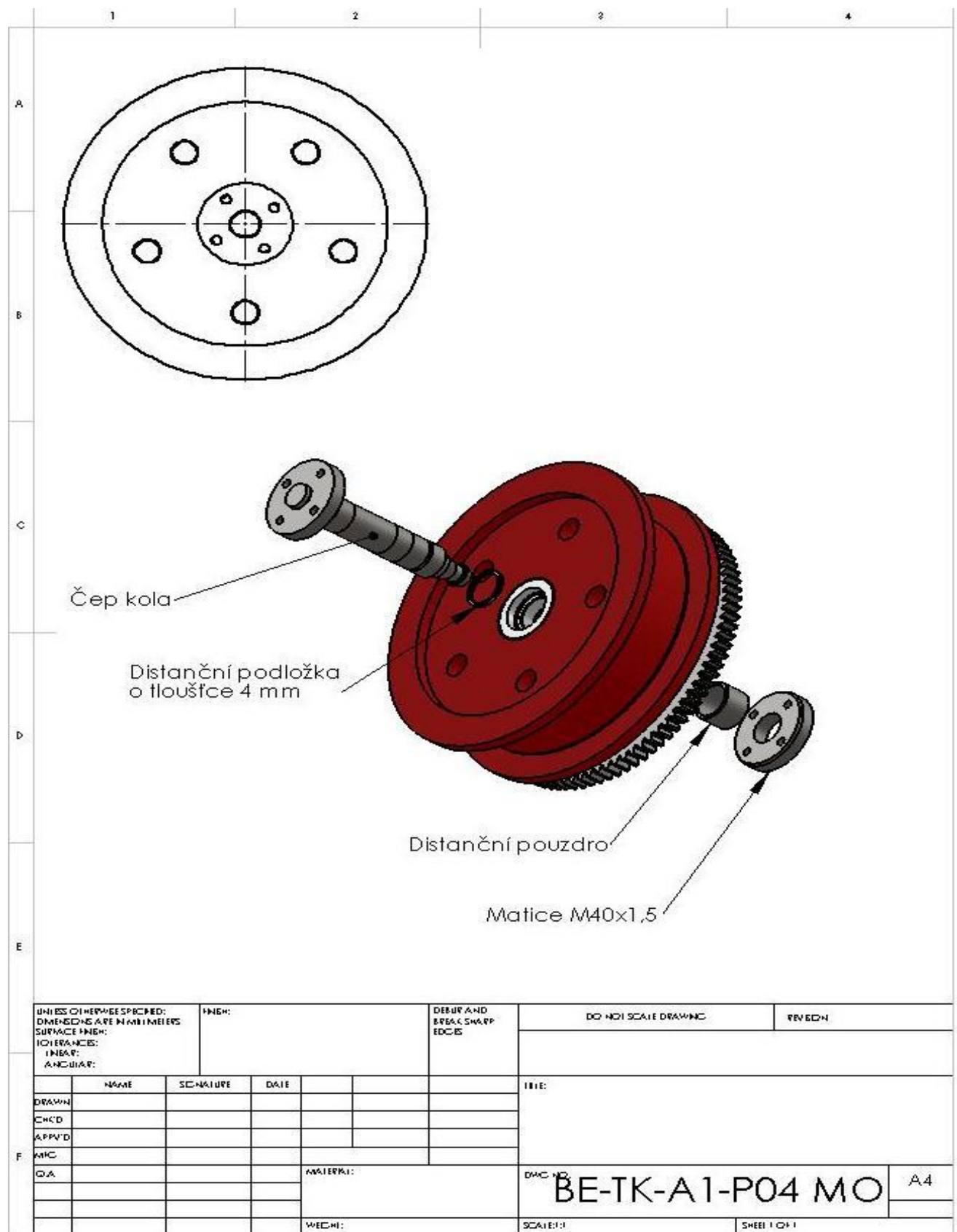


Fig. 4 Adjustment of wheel
gaug

Chain Block Bridge Girder

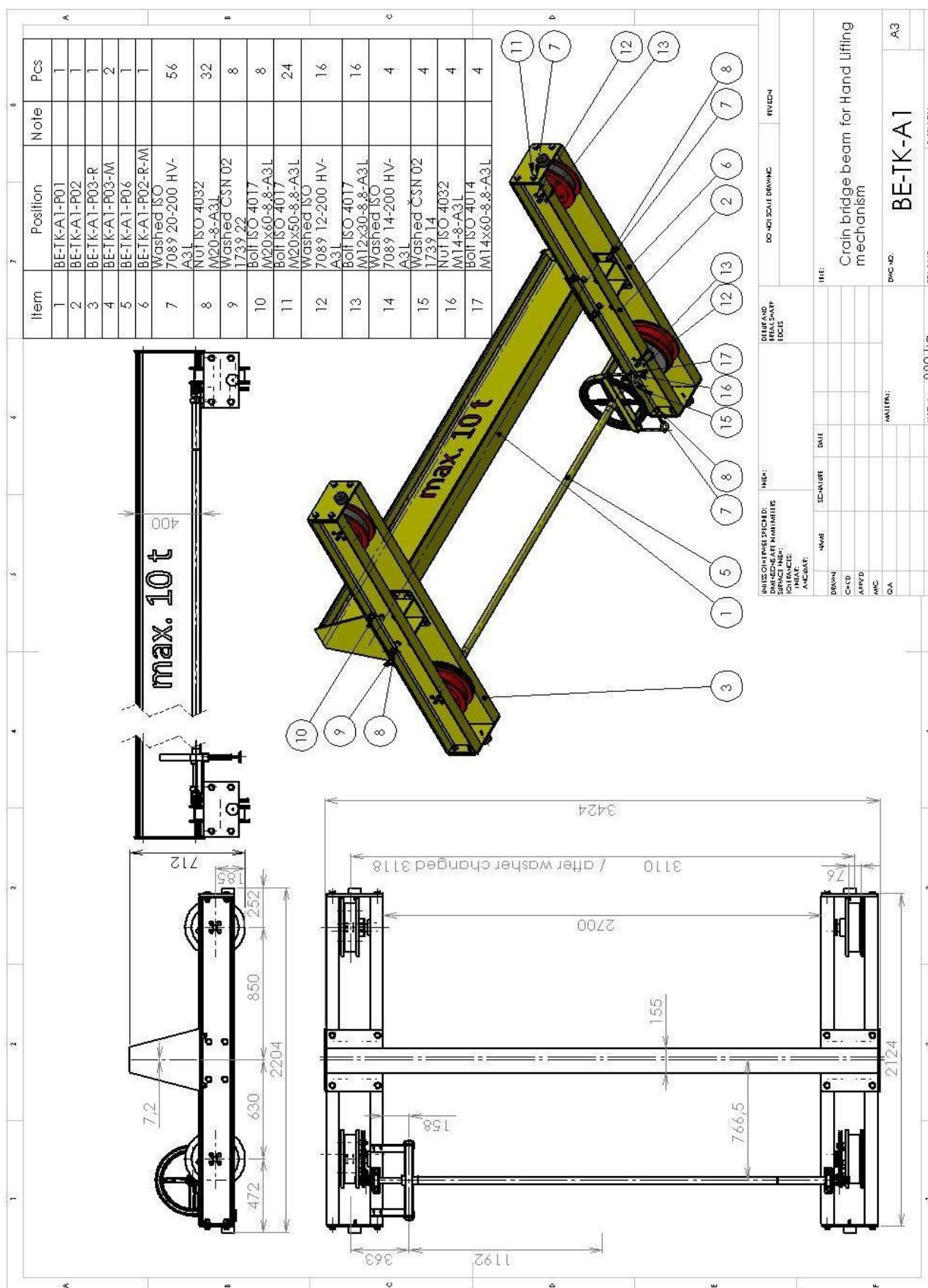


Fig. 5 Placement of bolts, washers and nuts.

Chain Block Bridge Girder

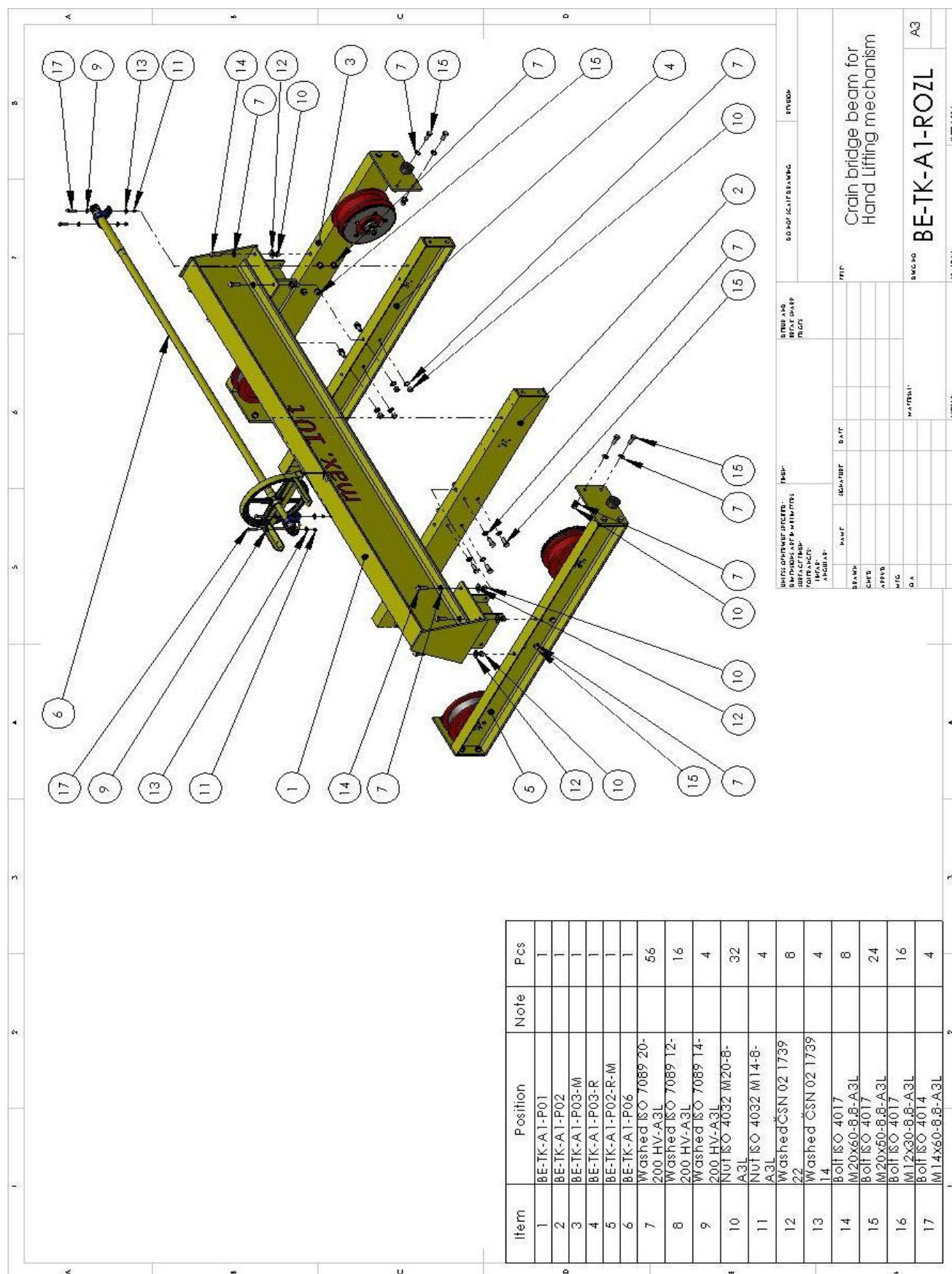


Fig. 6 Exploded view.

Chain Block Bridge Girder

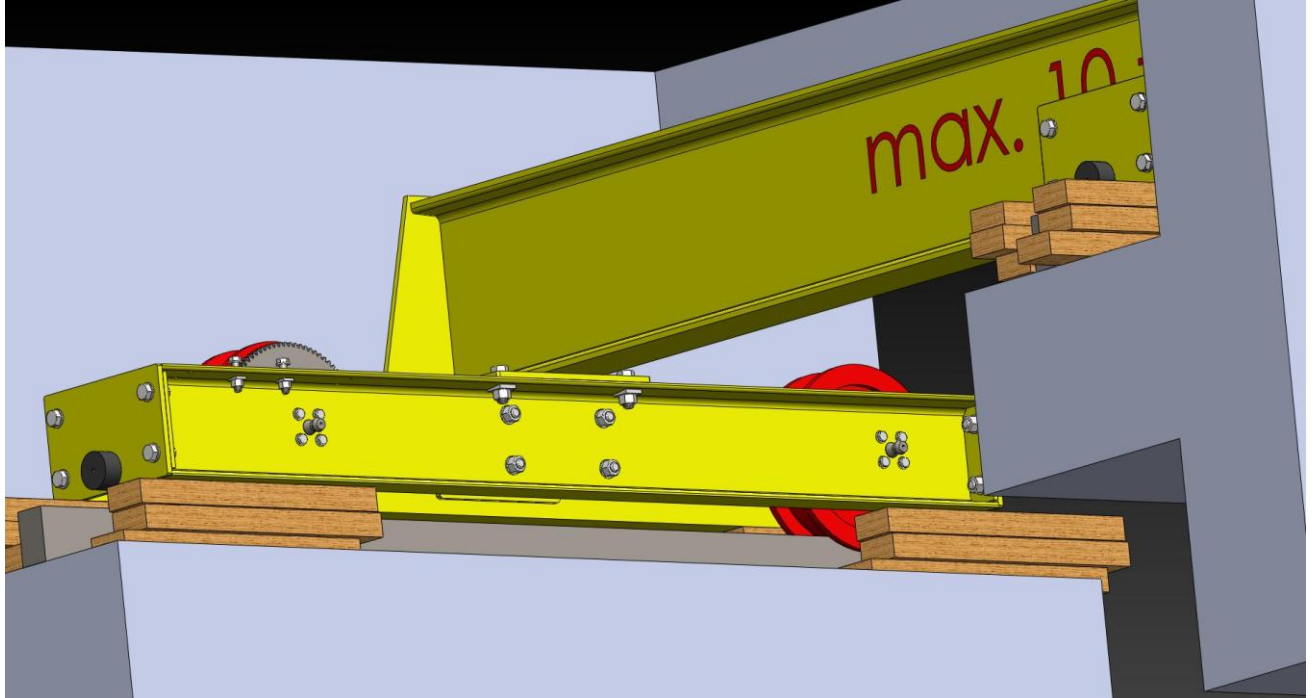


Fig. 7 Mounting undercarriage sides.

After fitting sides from U-profile 220 on the undercarriage, install bolts, washers, angle square washers and nuts.

Chain Block Bridge Girder

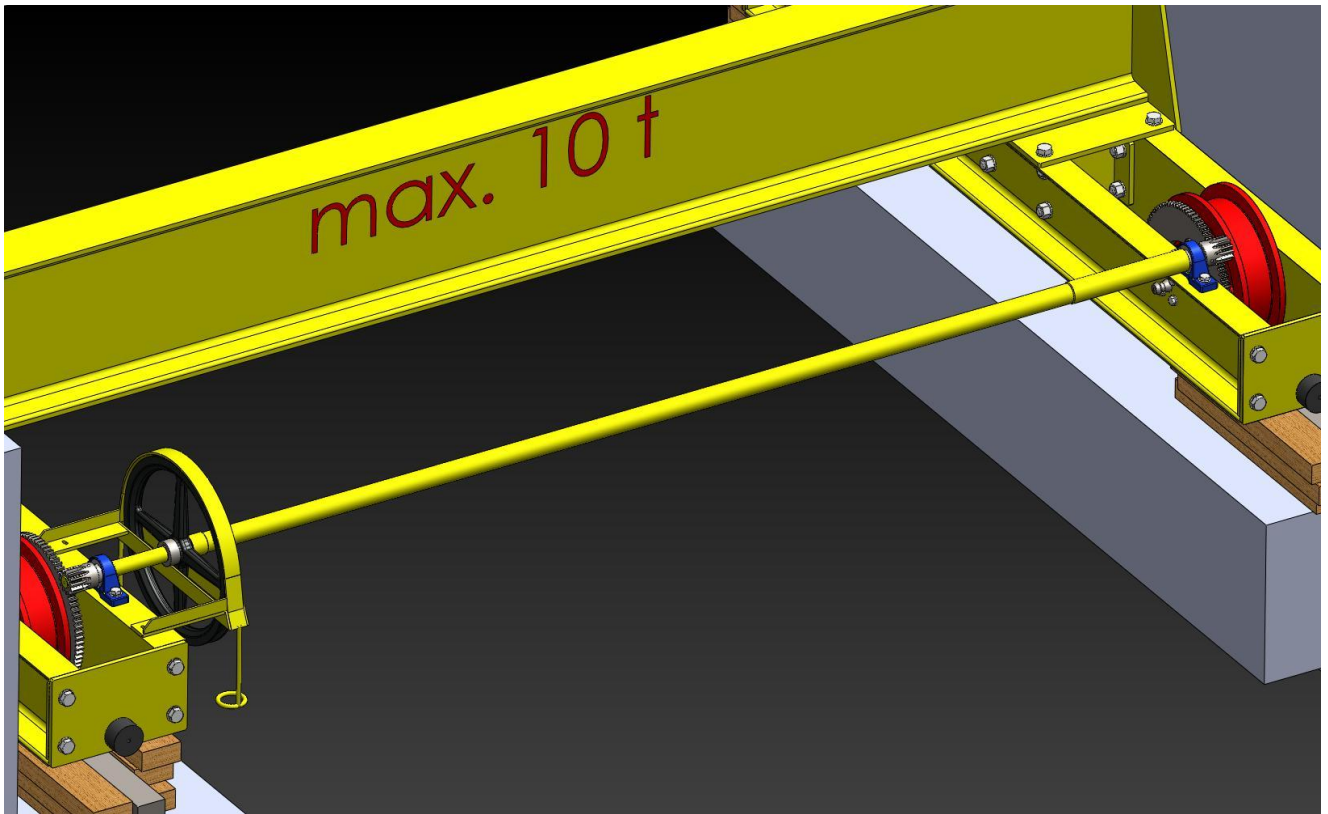


Fig. 8 Mounting chain drive for the bridge travel.

During the mounting adjust the gear mesh.

The gear mesh shall be checked by means of newspaper; a strip of the paper must go through the gear with no damage, cutting.

Now tighten all bolted connections; after a week of operation, check the tightening of nuts and bolts again!

The assembly is complete; check the side clearance between wheel tires and rails!

The bridge must move on the rails smoothly so that the rails are not gripped by wheel tires from inside or outside; if necessary, rectify the situation!

Otherwise, the bridge can derail and fall down on the operators!!